

NEWS MAGAZINE



AUTUMN 2019

CATSHILL & NORTH MARLBROOK

Parish Council

www.catshillandnorthmarlbrook-pc.gov.uk

Your Parish Council NEEDS YOU

Catshill and North Marlbrook Parish Council are seeking
new Parish Councillors for long term relationships...

Mr, Mrs or Ms Right will need the following:

Communication Skills - good listener, responds to e-mails sent by the clerk, open to new ideas, computer literate and willing to work electronically

Personal Qualities - honest, decent, confident, visionary, forward thinking, proactive, strategic, flexible, respectful of professional knowledge and objectivity of officers, leadership, supportive, polite, patient but tenacious and a good sense of humour!

Commitment - prepared for meetings, team player, punctual, available and accessible for scheduled and ad hoc meetings, takes role seriously, willing to participate, interested, enthusiastic and with a positive outlook

Knowledge - understands council's strategy, understands roles and responsibilities of officers and councillors, understands council's powers, willing to learn and develop, undertake training and understands the Code of Conduct

Communitarian - passionate about the community, focused on the whole community and not a single issue

Basics - stays awake in meetings, treats others with dignity, has reasonable and respectful dress standards for council meetings and who gives the meeting their full attention!

COULD THIS BE YOU?

You might not have all the above but training and guidance is always available.

For further information, please contact the Clerk via email
parishclerk@catshillandnorthmarlbrook-pc.gov.uk

WE are entering event season in the Parish! These are the important dates you may wish to add to your calendars

Bonfire Event

The Catshill Bonfire will return to the Meadow on Saturday 2nd November 2019, with the gates opening at 6:00pm. The Bonfire will be lit at 6:30pm and the fireworks will commence at 7:15pm. The Event will once again be supported by the Scouts association who will be selling hot and cold drinks and food.

As in previous years, we would welcome donations of wood-based items for the bonfire. For Health & Safety reasons we are limited as to what items can be included in the bonfire. We also have very limited facilities available for collecting donated firewood, so would appreciate it if people could deliver the firewood to the Meadow on the morning or early afternoon, on the day of the event.

Please also remember, personal fireworks and sparklers are not allowed at the event for safety reasons.

Remembrance Service

On Sunday 10th November the **Remembrance Service** will be held at Catshill Social Club at 10am, followed by a procession to the War Memorial where the remainder of the service will be performed. The roads immediately surrounding this vicinity will be closed to facilitate this event and those who are affected will receive a letter closer to the time.

Christmas Lights Switch on

On Saturday 30th November we will be holding the **Christmas Lights Switch on** in Catshill. Join us outside the Village Hall on Golden Cross Lane and celebrate the start of the festive season with performing acts. The Event will take place between 3pm and 6pm. A short amount of the road will be closed in order to make the area safe. Those who will be immediately affected by this closure will receive a letter nearer to the time.

Christmas Meal for the Elderly

This most popular event returns to Catshill Village Hall on Friday 20th December 2019. A provision for the people who have no family, live alone or are elderly and will be unable to experience the full range of enjoyment this festive season. This free event will enable up to 50 people, initially from Catshill and North Marlbrook Parish, to enjoy entertainment, a three-course roast dinner and entertainment in the hopes of spreading some Christmas light and cheer to those most in need.



WELCOME to the Autumn edition of our parish magazine. I hope you all have had a pleasant summer. It is amazing how quickly the dark nights are starting to draw in now.

We are heading towards the busiest part of the year for the Parish Council, with Halloween and Christmas on the horizon.

I hope many of you will attend the forthcoming Bonfire and Fireworks event, which will take place on Saturday 2nd November. This event is jointly run by your Parish Council and the 6th Bromsgrove Scouts Group. Please see the advert on the rear of this magazine for more details of the event.

The Parish Council will also be involved in the forthcoming Remembrance Service, the Christmas Lights Switch-On and the now very popular Christmas Meal event.

I hope that you all take the opportunity to read the enclosed article about The Neighbourhood Plan, and complete the related survey, to enable the '*Neighbourhood Plan Steering Group*' to designate green spaces formally and safeguard them for the community.

Membership of the '*Neighbourhood Plan Steering Group*', consists of Parish Councillors and local residents. I think it is only right for me to namecheck some of the local residents on the group; the chair Chris Fabray, Paul Crysell and Philip Sharp. All three of them bring their own specialist skills from their previous careers. They have made a significant contribution to the ongoing development of the Neighbourhood Plan and on behalf of my colleagues on the Parish Council I wish to thank them for their continued public service.

Councillor Bernard McEldowney

Parish Council Website

THE Parish Council are very pleased to announce the launch of our website which can be accessed at:

www.catshillandnorthmarlbrook-pc.gov.uk

This is an ongoing project that will eventually allow access to social media in the form of Facebook and Twitter, hopefully encompassing a wide audience in the parish of Catshill and North Marlbrook



IN this edition we “cross the road” from last edition’s feature on Wilkes’ Corner Store, and turn our attention to 2, Wildmoor Lane, known as “The Cannister” or “Caddy Corner” courtesy of Mrs. Pauline Riley.

The photographs show how the property looked in 1926 when it was a general stores, and today.

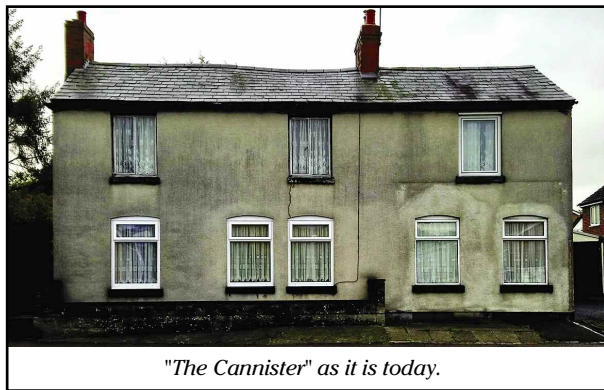


2, Wildmoor Lane in 1926.

The 1926 photograph clearly shows the then recently constructed two storey shop and bedroom extension to the right. Before this, the shop was based in the window to the right of the house door – evidence of which can be seen in the brickwork above the window.

Early 1960s road widening / realignment caused the trees and hedge to be removed from the frontage, along with stables and outbuildings (not shown in this photograph).

The reason this area is called “The Cannister” or “Caddy Corner” is because there was an earlier general stores sign (not the one in this photograph) that was in the shape of a tea caddy!



"The Cannister" as it is today.

The store became a butchers shop in 1927, when Henry Albert Arthur Riley (better known as Jack Riley) arrived in the village. Jack remained there until he retired in 1972, when Roland (Les) Hall and his wife Dorothy took on the shop. In 1975/6 Gerald Dunn and his son Simon took on the business, and after Gerald’s death in 1986, Simon continued to run the butchers until late 1990 when the shop closed. In

1991/2 the shop was converted to be part of the house, as it is today.

The 1926 photograph shows Lilly May Fisher by the shop but we are not sure who the lady by the house door is.

As ever, if you have an interesting photograph from the past that you would like to share, then please let us know!

Cllr Paul Masters.

THE Neighbourhood Plan Steering Group, as part of the emerging Neighbourhood Plan, is now turning its attention to the important topic of open spaces and Green Infrastructure. This is very much in response to the completed 'important issues and policy options' questionnaires that were received from you last year.

So what exactly is 'Green Infrastructure'?

Green infrastructure (GI) is defined as:

The concept of a Green Infrastructure Plan, as part of the Neighbourhood Plan, takes into account all these elements and binds them together to form a coherent whole.

Why do we need such a plan?

Because you told us that green and open spaces, wildlife and the environment are very important to you and without such a plan it constrains our ability as a community to preserve and even expand upon these assets. Recent legislation allows us to protect designated local green spaces and we need your help to achieve this aim. We need to show that these green spaces are demonstrably special to you the community.

Hence the delivery of such a GI Plan can help to:

- *Protect, restore and enhance existing green infrastructure, and increase its functionality*
- *Create new green infrastructure*
- *Link green infrastructure assets*

How is the GI Plan to be developed?

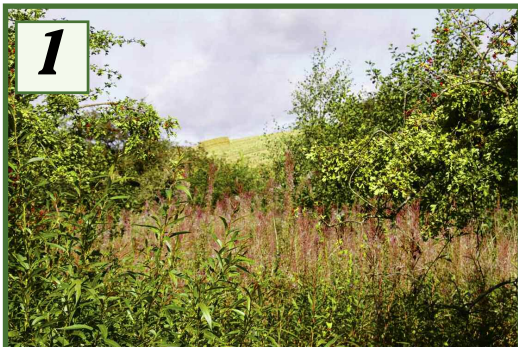
An Outline GI Map is included showing a number of formal open spaces, most of which are very familiar to us all. There are also a number of other local green spaces within our Parish and certain 'linkages' between them that include brook courses and footpaths which have the potential to form "Green Corridors" to help provide enhanced accessibility for both people and wildlife alike.

Please look at the Questionnaire in the centre of this News Magazine and fill in the appropriate boxes where you feel that these apply and return it in the envelope provided.

Thank you.

Local Green Spaces

1



Natural area near Cottage Lane, North Marlbrook at the side of the Marl Brook.

2



Natural ground to the north of Braces Lane sports ground.

3



Open area to the north of Lingfield Walk sports ground and balancing pond.

4



Small area of woodland adjacent to the M5 near Woodrow Lane.

5



Wooded area to the rear of Cowslip Close off Church Road near M5.

6



Wooded area to the south east of M5, near 'The Piggeries' to the rear of the cemetery.

Catshill & North Marlbrook Neighbourhood Plan

Green Infrastructure Planning

APPROXIMATELY half of the area of the Parish lies within the current Green Belt.

The Parish is characterised by the two small, but important stream courses that meet in Lower Catshill near to Church Road to the north of The Meadow. These brooks are known as '*The Battlefield Brook*' and '*The Marl Brook*'

As part of the emerging Neighbourhood Plan the Steering Group members are turning their attention to Green Infrastructure in reaction to the many responses contained in the returned questionnaires

Referring to the Outline Green Infrastructure Map attached please kindly put a tick '✓' in the appropriate boxes in the tables on this form and return this to The Clerk to the Parish Council in the free post envelope provided either by post or hand delivery to Catshill Village Hall. You can help us protect these local green spaces with your responses.

Thank you

Q1. To what extent does this statement apply for each area? *This formal open space is 'highly valued and very important to the community'?*

| FORMAL OPEN SPACES | | | | | | |
|--------------------|---|---------------------------|---------------|--------------|------------|------------------------|
| REF | DESCRIPTION | 1 Strongly disagree | 2 Disagree | 3 Neutral | 4 Agree | 5 Strongly Agree |
| A | Braces Lane recreation ground | | | | | |
| B | Lingfield Playground & Sports Field | | | | | |
| C | The Meadow | | | | | |
| D | First & Middle School Playing Fields | | | | | |
| E | Playground/Sports Field Milton Road | | | | | |

Q2. Thinking about the Local Green Spaces to what extent do you feel that the following descriptions apply to these spaces?

Place a tick '✓' in the box if you think this description applies

| LOCAL GREEN SPACES. | | | | | | |
|-----------------------|----------------|---|---|---|---|---|
| DESCRIPTION | SITE REFERENCE | | | | | |
| | 1 | 2 | 3 | 4 | 5 | 6 |
| Beauty | | | | | | |
| Historic Significance | | | | | | |
| Recreational Value | | | | | | |
| Tranquillity | | | | | | |
| Richness of Wildlife | | | | | | |

| LOCAL GREEN SPACES | |
|--------------------|---|
| SITE REF | DESCRIPTION |
| 1 | Natural area near Cottage Lane, North Marlbrook |
| 2 | Natural ground to north of Braces Lane Sports Ground |
| 3 | Open area to north of Lingfield Walk Sports Ground |
| 4 | Small area of woodland adjacent to M5. |
| 5 | Wooded area to the rear of Cowslip Close near M5. |
| 6 | Wooded area to the south east of M5 near 'The Piggeries'. |

Other comments:

.....

.....

.....

.....

.....

.....

Q3. Thinking about the Public Footpaths shown on the map to what extent do you feel that these definitions apply to these?

Place a tick ‘√’ in the box if you think this description applies

| PUBLIC FOOTPATHS | | | | | | |
|------------------|---|-------------------|----------|---------|-------|----------------|
| | STATEMENT | Strongly disagree | Disagree | Neutral | Agree | Strongly Agree |
| i) | I/my family regularly use the public footpaths | | | | | |
| ii) | I/my family are satisfied with the condition of the public footpaths | | | | | |
| iii) | I/my family consider that there are sufficient public footpaths for our needs | | | | | |
| iv) | I/my family would like to see more dedicated cycle paths | | | | | |
| v) | I/my family feel safe when using the public footpaths | | | | | |

Is there anything else that you would like to tell us?

.....

.....

.....

.....

.....

.....

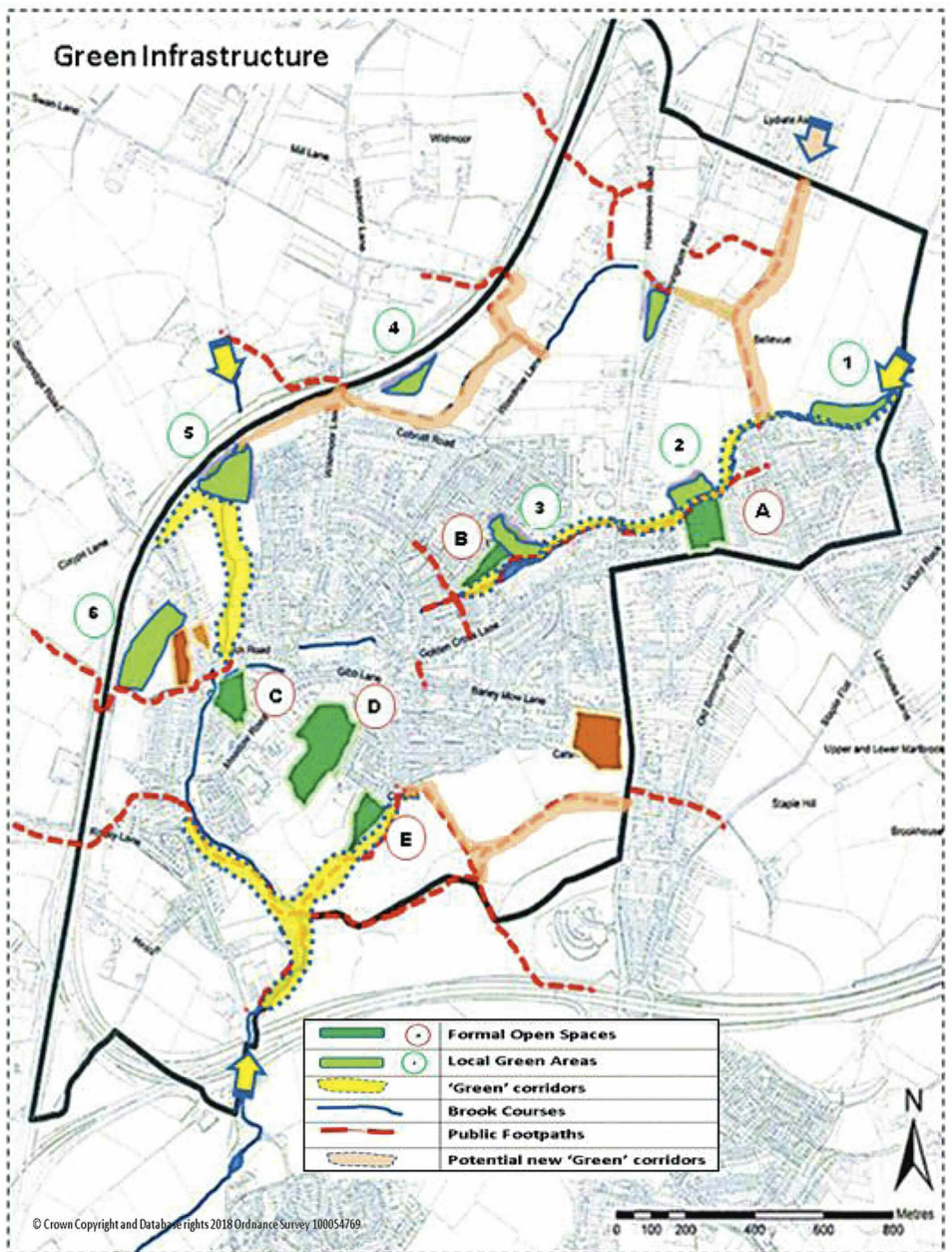
.....

.....

.....

.....

.....



You may wish to add a note or highlight particular elements on the above map.

.....

.....

Progress Report on the Development of the Catshill and North Marlbrook Neighbourhood Development Plan (NP)

Introduction

The aim of the NP is to bring decision making on land use and development down to the local community level, so that planning policies can be agreed and included in the Local District Plan for your benefit as residents of this Parish. The NP is so important because it puts you in control;

- ***Minimises undesirable ad-hoc development***
- ***Sets out what you want regarding, environment, housing, transport, parking and local economy***
- ***Identifies your vision and strategy for the future***
- ***Ensures the completed NP will be approved by you through a local referendum and then be incorporated into the Local District Plan.***

You can:

- ◆ ***Influence where and what type of development takes place in the Parish***
- ◆ ***Include policies and design standards in the NP***
- ◆ ***Identify areas for protection, like green spaces valued by the community***
- ◆ ***Set out improvements or additions to facilities and services***

However you can't:

- ◆ ***Block development taking place***
- ◆ ***Conflict with the local district plan***

Local District Plan of Bromsgrove Council

The Local Plan was agreed by Bromsgrove District Council (BDC) in January 2017. The Plan contains a target of 2300 houses to be built between 2023 and 2030 within the six main settlement sites of which this Parish is one. Over 90% of the available land is in the green belt and that is also the position in this Parish. Therefore a green belt review is now being undertaken by BDC and the revised plan will be completed by 2022. It is inevitable that houses will need to be built within the existing green belt.



Bromsgrove
District Council

www.bromsgrove.gov.uk

NP Consultation

The Neighbourhood Plan Steering Group started the NP in October 2016. During this initial period we consulted extensively with residents and businesses to find out



which issues were important to them using questionnaires and holding workshops in May and June 2017.

From these initial consultations we developed a Vision Statement for the NP:

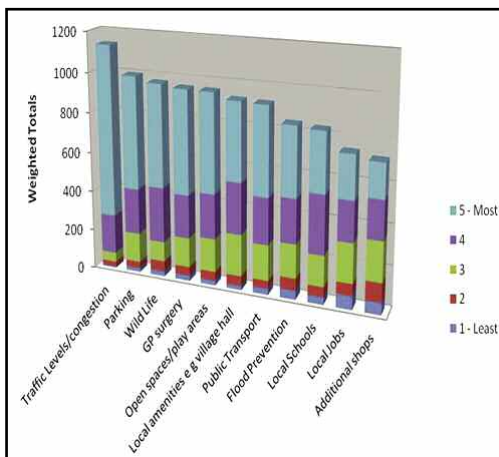
“By 2030 the Parish will have sustained and strengthened

its community feel through good quality development and community amenities, whilst maintaining its distinctive character and environment.”

Based on the views of residents and businesses, we subsequently developed objectives and policies aligned with this Vision Statement. In July 2018 a more detailed questionnaire was sent to each household in the Parish to ask your views on the plan we were developing.

Over 400 completed questionnaires were returned and a majority supported both the Vision Statement and the policy options proposed.

There was support for identifying sufficient houses to meet BDC targets, but householders were most concerned about the impact of increasing traffic through the village and the need to retain the character of the village. It is clear that any housing developments in the village should only take place in a controlled way so that the semi rural character and feel of the village is maintained. Sufficient infrastructure changes and services should be provided to mitigate the impact of these new housing sites. Policies developed must support these strongly held views in the Parish.



The results and analysis of all the consultations undertaken can be found on the NP website - www.catshillandnorthmarlbrookplan.org.uk.

A ‘Call for Sites’ exercise was undertaken in October 2018 involving both developers and landowners, who were identified from the Land Registry. Following two afternoons of presentations,

it became clear that several developers, together with land owners, were actively pursuing housing developments in the Parish.

What We are Doing Now

As a result of the increasing scrutiny by all interested parties including land owners, developers and BDC, of all our work, we have now undertaken a more detailed assessment of potential sites for housing development. Government funding has

enabled more detailed work to be undertaken by independent consultants. These include a comprehensive Housing Needs assessment to show what type of housing is appropriate for the area and what amount and type of affordable housing should be planned for in this housing mix.

It is inevitable that BDC will allocate new housing in the Parish, but we have an opportunity to identify sites which we believe are suitable and sustainable in the long term. We will not support the use of sites which we consider unsuitable including sites which some developers may wish to build on. We are also developing a green infrastructure strategy to protect and enhance green spaces, footpaths, cycle ways and wildlife habitats.



This is why the NP is so important to protect the long term interests of the Parish. The plan will cover the period up to 2030.

Please take part in the survey within this magazine to help us designate green spaces formally and safeguard them for the community.

Final Consultation and Referendum

It is our intention to complete a final draft of the NP by the end of this year (2019). In the Spring of 2020, we will enter into a final round of consultation through workshops and open days to allow you to comment and give us your views on this final report. We will respond to every submission received and alter the final report as necessary.

The Parish Council will then submit this report together with other statutory documentation to BDC for their round of consultation and then examination by an external examiner. If the final report is approved by this examiner, a referendum will be held and you will decide whether the NP report is enacted as part of the Local Plan.

We will continue to provide update reports through this Parish Magazine. If you have any burning issues you can raise them at the regular Steering Group meetings which are advertised on the NP website. The next meeting will be held on **4th December 2019**.



Dear friends, Greetings!

MY name is Latika Singh and I am the new Minister at Catshill Methodist Church, and I live in the village with my daughters and my husband, who is also a Methodist Minister. My background is Indian, but I have been living in the UK for the past fifteen years. We are all settling into our new home, churches and surroundings, and we find people around the village and Churches very welcoming and friendly; for this we are very thankful.

September is the new connexion year for Methodists, and for me this year is very significant, because this is my first appointment in ministry within the Methodist Church, as a probationer Presbyterian, appointed in the Bromsgrove and Redditch Circuit.

I have a pastoral oversight for three Methodist churches; Catshill, Lickey End and Studley, so therefore it is a new beginning for me, my family and my churches.

I would like to offer friendship and a new relationship to all the community in the love of Christ, as Jesus encourages new beginnings by offering a new life to all people by giving us a new commandment to love one another as we have been loved by Him.

I feel blessed to be located at Catshill, and look forward to working, meeting new people, and getting to know the community. Please do come and say hello if you find me walking around in the village. I would love to meet and have a chat. I look forward with the hope and promise for the new beginnings which lie ahead for us within God's grace.

With every best wish, Latika Singh.



Latika Singh.

Catshill Methodist - A Harvest Festival with a Difference

SUNDAY 29th September saw a Harvest Festival with a difference at Catshill Methodist Church. Members of the church have for many years helped support the Basement Project which is a local charity that helps young people under 25 with any issues or problems they are experiencing.

Because the Basement Project has plenty of food in stock at present, but does require funds, it was decided that church members would take along empty (washed) food packaging such as tins, bottles and cartons etc to form the harvest display, and that these food containers would hold a monetary gift to be split between the Basement Project, and All We Can, which is an international development and emergency relief organisation focusing on those in the greatest need, and is an integral part of the Methodist family.

Another feature of the Harvest festival this year was a beautiful, colourful "floral" display, which had been skilfully made of "flowers" created from recycled food containers. The effect was stunning and helped give a modern and relevant twist to the traditional Harvest themes.

Don't Be Alone At Christmas

Please complete/photocopy this form and post to/put through the door of the Parish Office at Catshill Village Hall, Golden Cross Lane, Catshill, Bromsgrove B61 0JZ.

I would like to attend the Christmas Event to be held on Friday 20th December 2019.

Name:

Telephone Number:

Address:

Do you have any allergies? Yes ☐ No ☐

If yes, please detail:

Do you require a vegetarian meal? Yes ☐ No ☐

Do you require transport to the event? Yes ☐ No ☐

Do you have any further special requirements? Yes ☐ No ☐

If yes, please detail:

The Parish Clerk will be in contact with you again prior to the event if you express an interest in attending.

Useful Numbers

Bromsgrove District Council: **01527 881288**

Out of hours emergency: **01527 871565**

Catshill and Marlbrook Local Policing Team

01527 583733 / 0300 333 3000

Crimestoppers: **0800 555 111**

Contact Us

Carol Blake, Clerk to the Council,
Catshill & North Marlbrook Parish Council,
Catshill Village Hall, Golden Cross Lane,
Catshill, BROMSGROVE. B61 0JZ.

Tel: **01527 873266** - Mob: **07813 671899**

e-mail: parishclerk@catshillandnorthmarlbrook-pc.gov.uk

www.catshillandnorthmarlbrook-pc.gov.uk



The Parish Council does not accept responsibility for any errors or claims made by advertisers which are incorrect. Statements and opinions expressed may not necessarily represent those of the Parish Council.

Published by Catshill & North Marlbrook Parish Council



Catshill Bonfire

**The Meadow
Meadow Road
Catshill**

**Saturday 2nd
November**

**Adults £3 Children £2
Under 5's FREE**

In association with

**Free
Parking**
at Catshill
Middle School



**Gates open 6.00pm Bonfire lit 6.30pm
Fireworks 7.15pm**

Any person carrying alcohol or appearing to be intoxicated will not be allowed entry.
No personal fireworks or sparklers are allowed to be brought onto site.